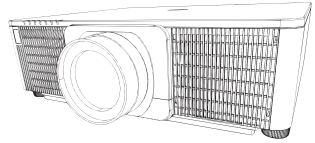


# Projector

# CP-WU9100/CP-HD9950

## User's Manual - Network Quick Setup Guide



Thank you for purchasing this product.

This manual is intended to explain only how to setup this product. For proper use of this product, refer to this manual and the other manuals for this product.

See the corresponding pages for quick setup.

- Connection Setup (7)
- System Requirements for Applications (13)

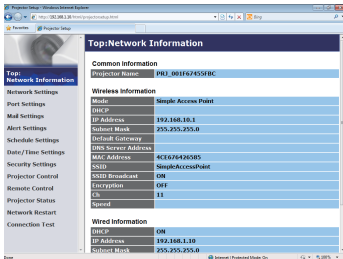
### 1. Features

#### 1.1 Web Control

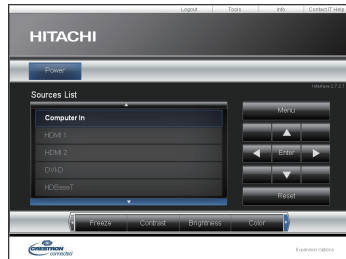
Connecting the projector and the computer using the network, remote control and status monitoring of the projector can be performed by Web browser.

Two types of interface, Projector Web Control and Crestron e-Control, are available for this projector.

Projector Web Control



Crestron e-Control

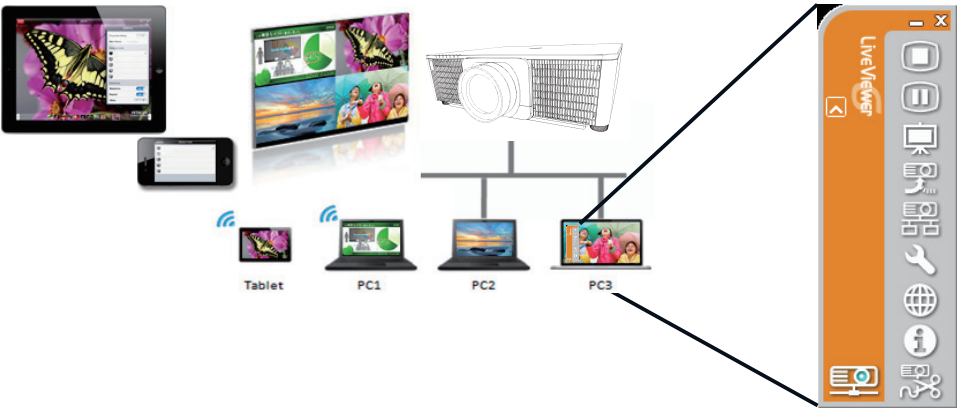


# 1.2 Network Presentation

The projector can display the computer screen images transmitted through the network.

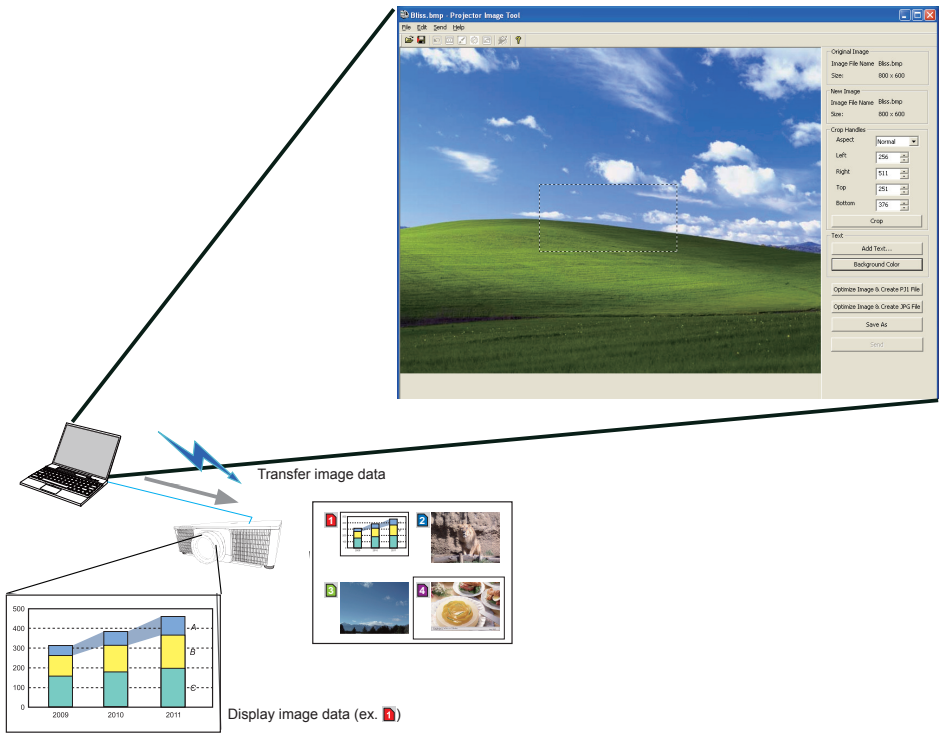
To use Network Presentation, an exclusive application, LiveViewer is required. The following application is required to use Network Presentation.

OS	Application
Windows®	LiveViewer
Mac OSX	LiveViewer
iOS(iPhone/iPad)	Projector Quick Connection
Android	Projector Quick Connection



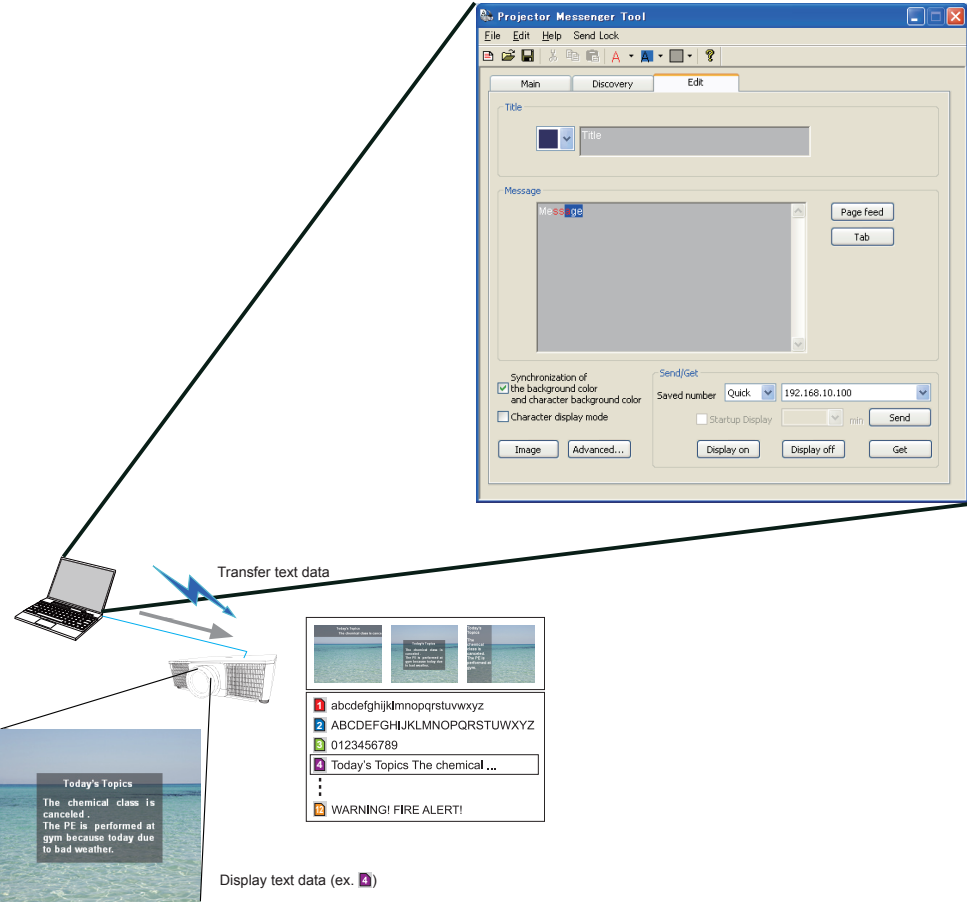
# 1.3 My Image Function

The projector can display still images transferred using the network.  
You can allocate up to four image files.  
MY IMAGE transmission requires an exclusive application for your computer.  
Use the application to transfer the image data.



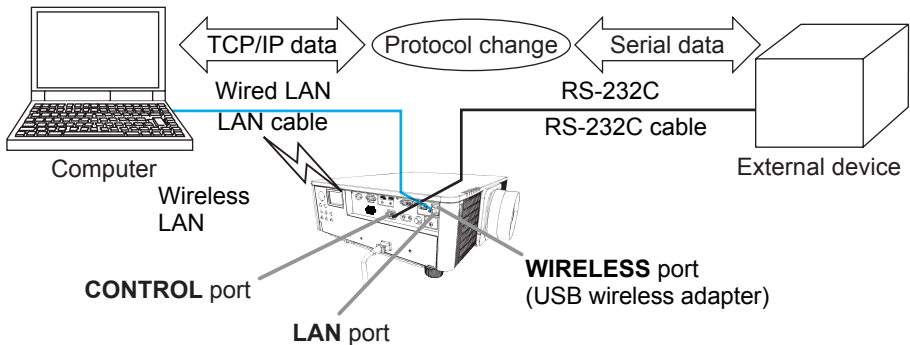
# 1.4 Messenger Function

The projector can display text data transferred using the network on the screen.  
Up to 12 text data can be stored.



## 1.5 Network Bridge Function

This projector is equipped with the NETWORK BRIDGE function to perform mutual conversion of a network protocol and a serial interface. By using the NETWORK BRIDGE function, a computer connected to the projector using wireless or wired LAN can control an external device using RS-232C communication using the projector as a network terminal.



## 1.6 Other Functions

### 1.6.1 E-mail Alerts

The projector can automatically send an alert message to the specified using addresses when the projector detects a certain condition requiring maintenance or detected an error.

### 1.6.2 Projector Management using SNMP

The SNMP (Simple Network Management Protocol) manages the projector information, which is a failure or warning status, from the computer on the network. The SNMP management software is required on the computer to use this function.

### 1.6.3 Event Scheduling

The scheduling function sets up scheduled events including power on / power off. It allows the projector to be self-managing. The schedule can be set in Projector Web Control or OPTION-SCHEDULE menu in the projector.

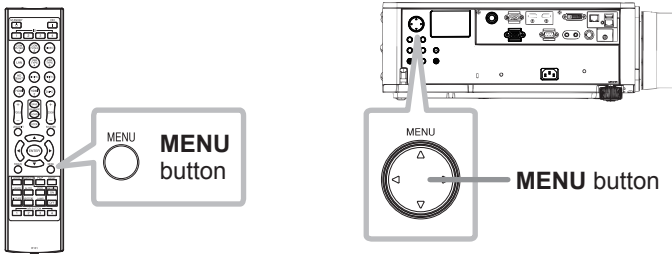
### 1.6.4 Command Control using the Network

You can configure and control the projector using the network using RS-232C commands.

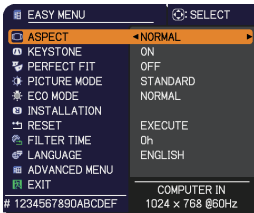
**Follow the on-screen display (OSD) for proper operation.**

## 2. Changing the Display Language

1) Press the **MENU** button on the remote control or the control panel of the projector.



2) From EASY MENU, select LANGUAGE.  
Then, select your desired language.

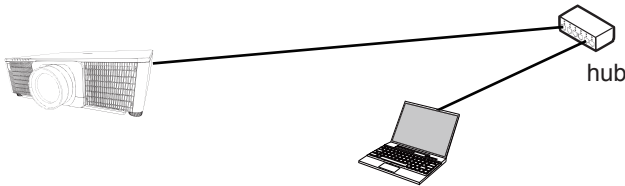


### 3. Connection Setup

Refer to System Requirements for Applications (📖13) first before setting up the connection.

#### 3.1 Connection using Wired LAN

The connection using wired LAN is available. Set wired LAN for the projector by following the instructions of your network administrator when connecting to the existing network.



#### 3.2 Connection setup of Wired LAN

- 1) Connect the projector to the computer using a hub with a LAN cable (CAT-5e or higher).
- 2) Press the **MENU** button on the remote control or the control panel of the projector.

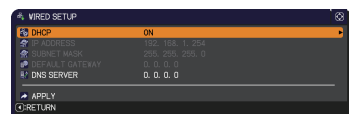
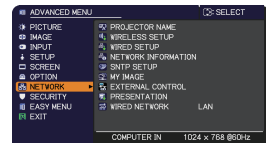
The MENU you last used will appear.

Use the cursor button to select the following.

EASY MENU > ADVANCED MENU > NETWORK > WIRED SETUP

- 3) Set the following items in WIRED SETUP.

- DHCP
- IP ADDRESS
- SUBNET MASK
- DEFAULT GATEWAY
- DNS SERVER



For setting an IP address, refer to About IP address. (📖8)

Select APPLY, then press the **ENTER** button to apply the settings.

[About IP address]

■ Setting manually

The Network address portion of the IP address setting on your computer must be the same as the setting on the projector. Also, the entire IP address on the computer must not overlap with that of the other devices on the same network, including the projector.

The projector's settings are as follows.

IP address: 192.168.1.254

Subnet mask: 255.255.255.0

(Network address: 192.168.1 in this case)

Therefore, specify the computer's IP address as follows.

IP address: 192.168.1.xxx (xxx shows decimal number.)

Subnet mask: 255.255.255.0

(Network address: 192.168.1 in this case)

For example

Select from 1 to 254 for "xxx" without duplicating any other equipment.

In this case, as the IP address of the projector is "192.168.1.254", specify a setting between 1 to 253 for the computer.

■ Setting automatically

When a DHCP server exists in the connected network, it assigns an IP address to the projector and the computer automatically. If DHCP server is not available, set IP ADDRESS, SUBNET MASK and DEFAULT GATEWAY.

**NOTE**

- Although HDBaseT™ and LAN port can be used for wired LAN, they cannot be used simultaneously. Connect LAN cable to the port set in WIRED NETWORK on NETWORK menu.
- The same network address cannot be used for both wireless LAN and wired LAN.
- If the projector and the computer exist in the same network (such as, same network address), leave the default gateway field blank.
- When the projector and the computer exist in different networks, the default gateway must be set. Consult with the network administrator in detail.



### 3.3 Connection using Wireless LAN

Connection using wireless LAN is available with option parts, USB wireless adapter (USB-WL-11N).

Wireless LAN has two types of connection, Simple Access Point and Infrastructure.

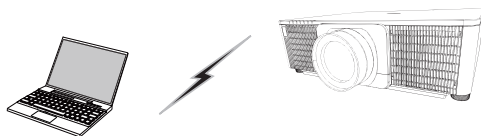


Fig. 3.3.a Without an access point communication (Simple Access Point))

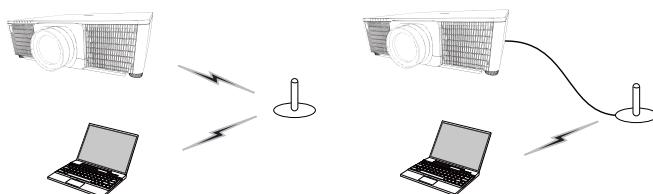


Fig. 3.3.b With an access point communication (Infrastructure)

- \* Simple Access Point is a mode which connects to computers directly. The projector can assign IP Address up to 11 devices.
- \* Infrastructure is one of the wireless LAN communication methods with having an access point to communicate. If communicating with existing network, consult with your network administrator.

#### NOTE

- Network settings can also be changed in Network Settings of Projector Web Control.
- Wireless LAN initial settings for the projector are as follows.
  - Mode: Simple Access Point
  - DHCP: Off
  - IP address: 192.168.10.1
  - Subnet Mask: 255.255.255.0
  - Default Gateway: 0.0.0.0
  - DNS Server: 0.0.0.0
  - SSID: SimpleAccessPoint\*
  - SSID Broadcast: ON
  - Encryption: Off
  - CH: 11
- \*Change default setting before use not to overlap.
- The same network address cannot be used for both wireless LAN and wired LAN.
- Communication speed of the projector may be deteriorated in Simple Access Point mode depending on the number of connected devices.
- Network communication cannot be available between the devices connected to the projector in Simple Access Point mode.

### 3.3.1 Connection in Simple Access Point Mode

Set the following when connecting the projector and the computer in Simple Access Point mode.

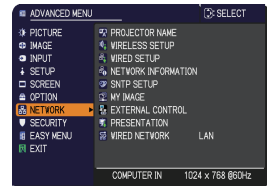
#### Projector setting

[Restriction on plugging and unplugging the USB wireless adapter]

Before you insert or pull out the USB wireless adapter from the projector, turn off the power of the projector and pull out the power cord's plug from the outlet. Do not touch the USB wireless adapter that is connected to the projector while the projector is receiving AC power.

Do not use any extension cable or device when connecting the adapter to the projector.

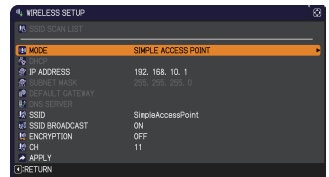
- 1) Attach the USB wireless adapter to the **WIRELESS** port of the projector.
- 2) Turn on the projector.
- 3) Press the **MENU** button on the remote control or the control panel of the projector.  
The MENU you last used appears.



Use the cursor button to select the following.

EASY MENU > ADVANCED MENU > NETWORK > WIRELESS SETUP

- 4) Set the following items in WIRELESS SETUP.
  - MODE: SIMPLE ACCESS POINT
  - IP ADDRESS
  - SSID
  - SSID BROADCAST
  - ENCRYPTION
  - CH



Select APPLY, then press the **ENTER** button to apply the settings.

About network setting

- The fourth octet of the projector's IP address is fixed to 1.
- Subnet mask of the projector is fixed to 255.255.255.0.

#### Computer setting

- 1) The DHCP server function of the projector is always enabled. Enable the DHCP setting of the computer.
- 2) Select SSID set for the projector by following the procedure of wireless connection of the computer. Enter encryption key by following the computer's instruction if it is encrypted.

#### NOTE

- As for the procedure of setting network and wireless connection for the computer, refer to the manual of computer or wireless LAN device.

### 3.3.2 Connection in Infrastructure Mode

Set the following when connecting the projector and the computer in Infrastructure mode.

#### Projector setting

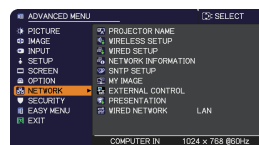
[Restriction on plugging and unplugging the USB wireless adapter]

Before you insert or pull out the USB wireless adapter from the projector, turn off the power of the projector and pull out the power cord's plug from the outlet.

Do not touch the USB wireless adapter that is connected to the projector while the projector is receiving AC power.

Do not use any extension cable or device when connecting the adapter to the projector.

- 1) Attach the USB wireless adapter to the **WIRELESS** port of the projector.
- 2) Turn on the projector.
- 3) Press the **MENU** button on the remote control or the control panel of the projector.  
The MENU you last used appears.

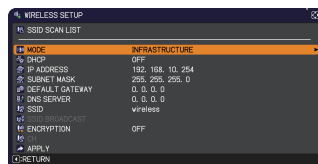


Use the cursor button to select the following.

EASY MENU > ADVANCED MENU > NETWORK > WIRELESS SETUP

- 4) Set the following items in WIRELESS SETUP.

- MODE: INFRASTRUCTURE
- DHCP
- IP ADDRESS
- SUBNET MASK
- DEFAULT GATEWAY
- DNS SERVER
- SSID
- ENCRYPTION




As for setting an IP address, refer to About IP address. (8)

Select APPLY, then press the **ENTER** button to apply the settings.

## SSID SCAN LIST function

The connection can be set up by selecting from SSID SCAN LIST without setting SSID and ENCRYPTION in WIRELESS SETUP. The procedure of connecting by SSID SCAN LIST is as follows.

- 1) Select SSID SCAN LIST in WIRELESS SETUP on NETWORK menu.  
The list of SSID in wireless network is displayed.
- 2) Select SSID in the wireless network you want to connect in the SSID SCAN LIST. The display to enter the encryption key appears if it is encrypted.  
Enter the encryption key by using software keyboard.
- 3) The icon indicating connected (  ) is displayed in SSID SCAN LIST screen when the connection is complete.

### NOTE

- Transmission speed may be slow depending on the settings of an access point.
- If the projector and the computer exist in the same network (such as, same network address), leave the default gateway field blank.
- When the projector and the computer exist in different networks, the default gateway must be set. Consult the network administrator for more information.
- Set wireless LAN for the projector by following the instructions of your network administrator when connecting to the existing network.
- Open System Authentication is used for WEP encryption, and Shared Key Authentication is not supported. The authentication with an access point succeeds and it appears that the connection is established normally despite entering an illegal encryption key due to Open System Authentication, but data cannot actually be transmitted.
- IP ADDRESS, SUBNET MASK, and DEFAULT GATEWAY must be set in advance when DHCP is set to OFF.

## 4. Applications

### 4.1 Applications

Download the latest version of the software from the Hitachi website below.

<http://www.hitachi-america.us/projectors>

<http://www.hitachidigitalmedia.com/>

<http://www.hitachi-dm.cn/>

<http://www.hitachi.co.jp/proj/>

For iOS/Android Network Presentation software, refer to the URL below for details and downloads of Projector Quick Connection.

<http://www.hitachi.co.jp/Prod/vims/proj/en/>

<http://www.hitachi.co.jp/proj/>

#### [System Requirements for Applications]

Application	Hardware and Software
LiveViewer	<p>[Windows]</p> <p>OS: Windows Vista® (Service Pack 1 or later) Windows® 7 Windows® 8 /8.1 Windows® 10</p> <p>Graphic card: VGA: 640x480 or higher (recommended XGA: 1024x768)</p> <p>CPU: Pentium 4 (2.8 GHz or higher)</p> <p>Hard disk space: 100MB or higher</p>

Application	Hardware and Software
LiveViewer	<p>[Mac]</p> <p>Mac OSX 10.5 Mac OSX 10.6 Mac OSX 10.7 Mac OSX 10.8</p> <p>Hard disk space: 15MB or higher</p> <div style="border: 1px solid black; padding: 10px; margin-top: 20px;"> <p><b>NOTE</b></p> <ul style="list-style-type: none"> <li>• Only for Intel version. Power Mac is not supported.</li> <li>• LiveViewer for MAC is not included in the bundled CD-ROM. Download it from the website.</li> </ul> </div>
Projector Quick Connection	<p>[iOS] iOS6 or later</p> <p>[Android] Android OS 4.0 or later</p>
Projector Image Tool(PJImg)	<p>OS: Windows Vista® Windows® 7 Windows® 8 /8.1 Windows® 10</p> <p>CPU: Pentium 3 (500MHz or higher)</p> <p>Hard disk space: 20MB or higher</p>
Projector Messenger Tool (PJMessenger)	<p>OS: Windows Vista® Windows® 7 Windows® 8 /8.1 Windows® 10</p> <p>CPU: Pentium 3 (500MHz or higher)</p> <p>Hard disk space: 20MB or higher</p>

## 5. Troubleshooting

Check the following web address where you may find the latest information for this projector.

**<http://www.hitachi-america.us/projectors>**

**<http://www.hitachiserviceeu.com/support/guides/userguides.htm>**

### **NOTE**

- The information in this manual is subject to change without notice.
- The illustrations in this manual are for illustrative purposes. They may differ slightly from your projector.
- The manufacturer assumes no responsibility for any errors that may appear in this manual.
- The reproduction, transfer or copy of all or any part of this document is not permitted without express written consent.